



**MAHAVEER**<sup>®</sup>  
Finest Homes & Honest Practices

**MAHAVEER**  
***CELESSE***



# SITE PLAN



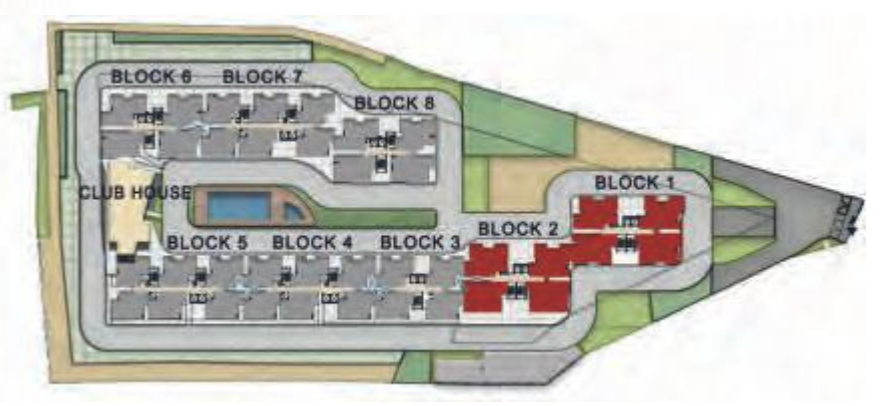
## LEGEND:

- |  |  |   |
|--|--|---|
| <p>1 PROJECT ENTRY / EXIT<br/>-WITH SECURITY BLOCK, DESIGNATED PEDESTRIAN AND VEHICULAR ENTRY</p> <p>2 CHILDREN'S PLAY AREA.</p> <p>3 SWIMMING POOL<br/>-WITH SEMI COVERED SHADE STRUCTURE &amp; INFORMAL SEATING</p> <p>4 MULTI PURPOSE COURT</p> | <p>5 CLUB HOUSE ENVIRONS<br/>-WITH DESIGNATED SPECIAL PAVING<br/>-WITH PEDESTRIAN PATHWAY<br/>CONECTING POOL &amp; PLAY AREA'S<br/>-WITH INFORMAL SEATING W/ LARGE PLANTER BOXES</p> <p>6 WATER FEATURE</p> <p>7 JOGGING TRACK</p> | <p>8 DROP OFF ZONES<br/>-WITH DESIGNATED SPECIAL PAVING</p> <p>9 TRANSFORMER YARD</p> <p>10 VISITOR'S CAR PARKING</p> <p>11 PERIPHERAL PLANTING</p> <p>12 DG UNIT AREA.</p> |
|--|--|---|

MAHAVEER CELESSE



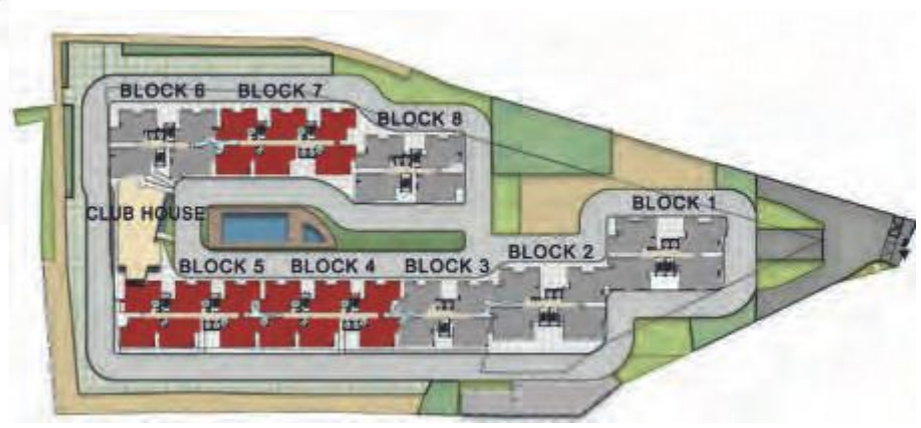
# BLOCK 1 & 2



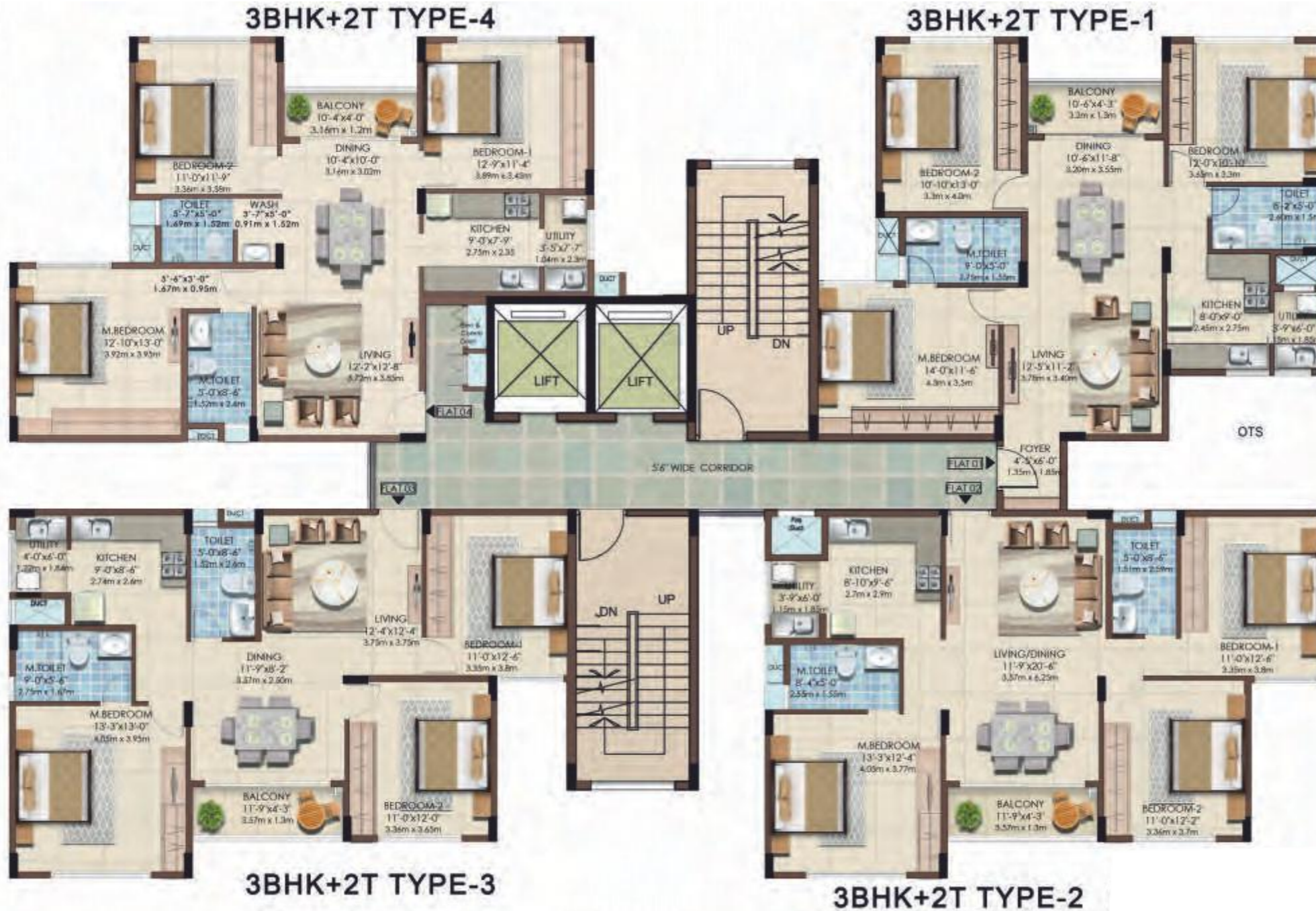
# BLOCK 3



# BLOCK 4, 5 & 7



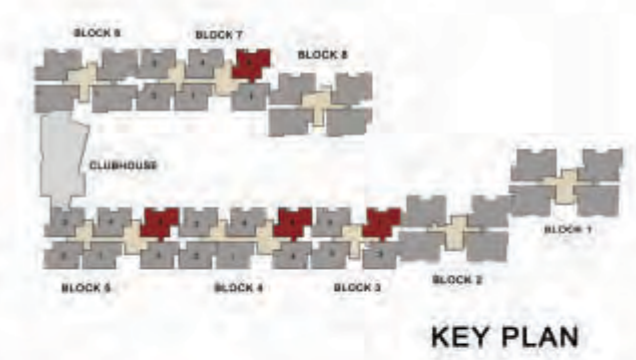
# BLOCK 6 & 8



# UNIT PLAN - 2 BHK, TYPE 1



TYPE	SALEABLE AREA
2BHK + 2T (TYPE 1)	1205-1217 SFT





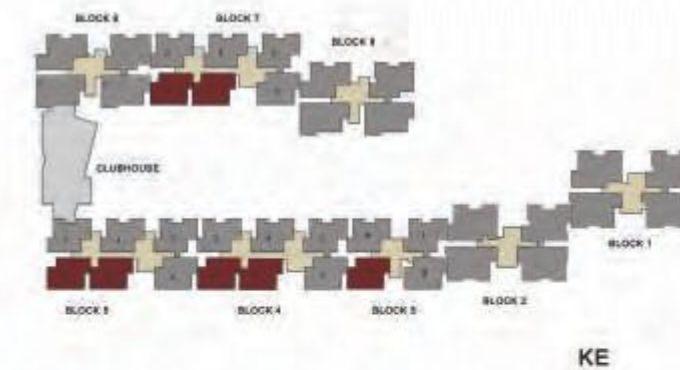
# UNIT PLAN - 2 BHK, TYPE 2



# UNIT PLAN - 2 BHK, TYPE 3



TYPE	SALEABLE AREA
2BHK + 2T (TYPE 3)	1183-1188 SFT



# UNIT PLAN - 2 BHK, TYPE 4

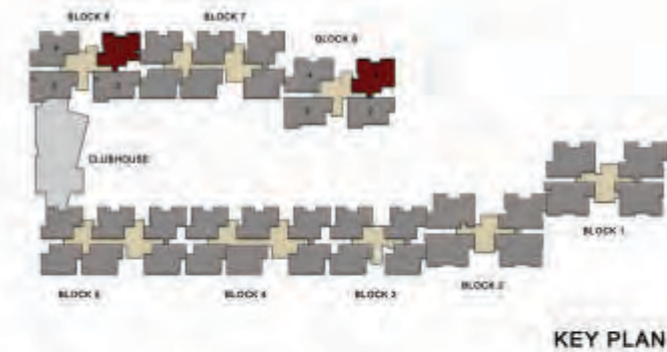


MAHAVEER CELESSE

# UNIT PLAN - 3 BHK, 2T TYPE-1



TYPE	SALEABLE AREA
3BHK + 2T (TYPE 1)	1392-1394 SFT



# UNIT PLAN - 3 BHK, 2T TYPE-2



# UNIT PLAN - 3 BHK, 2T TYPE-3



MAHAVEER CELESSE

# UNIT PLAN - 3 BHK, 2T TYPE-4



# UNIT PLAN - 3 BHK, 3T TYPE-1



MAHAVEER CELESSE



# UNIT PLAN - 3 BHK, 3T TYPE-2



MAHAVEER CELESSE

# UNIT PLAN - 3 BHK, 3T TYPE-3



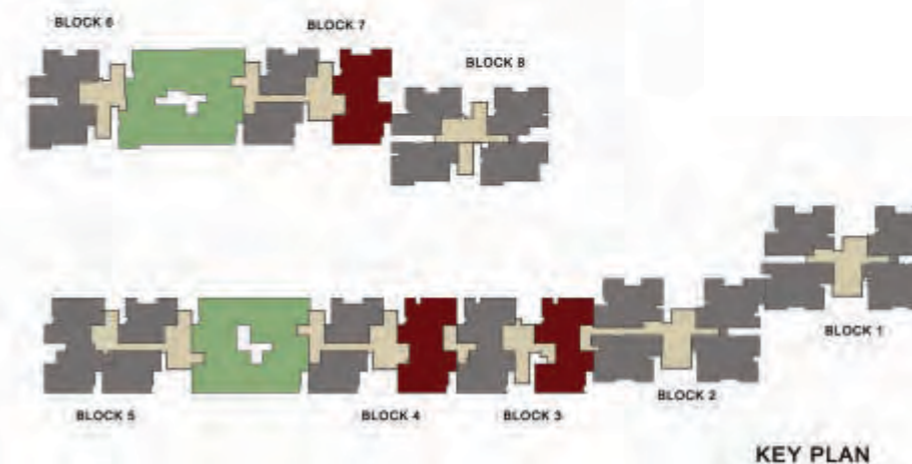
# UNIT PLAN - 3 BHK, 3T TYPE-4



# PENTHOUSE BLOCK 3, 4 & 7



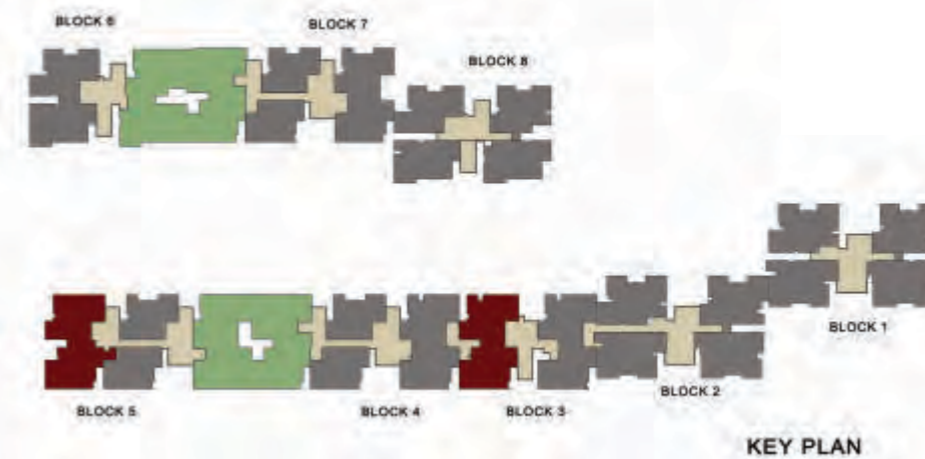
TYPE	SALEABLE AREA
3BHK + 3T	1854-1903 SFT



# PENTHOUSE BLOCK 3 & 5



TYPE	SALEABLE AREA
3BHK + 3T	1857-1876 SFT

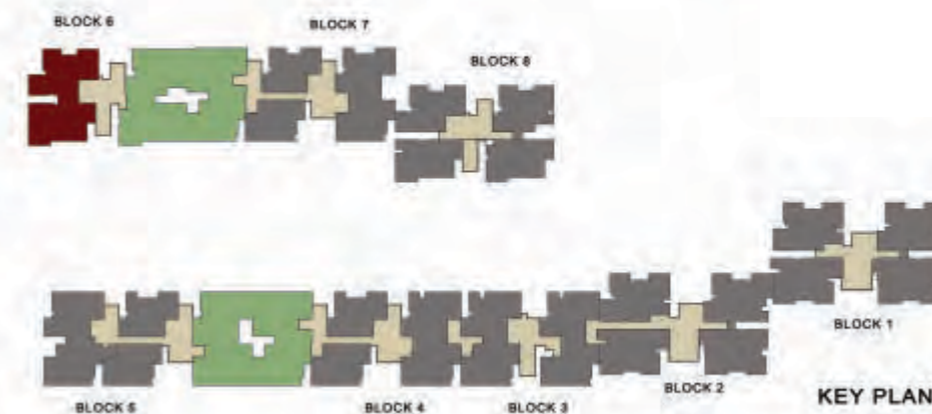


MAHAVEER CELESSE

# PENTHOUSE BLOCK 6



TYPE	SALEABLE AREA
3BHK + 3T	1923 SFT



# FACT SHEET

Total Site Area	4 Acres 34 Guntas
Total Number of Floors	1B+G+14 & 2B+G+14 floors
Number of Blocks	8
Total Number of Units	545

# SPECIFICATIONS

## STRUCTURE

- Seismic Zone - II compliant RCC framed structure
- Solid/Light Weight block masonry: 6 inch external walls and 4 inch internal walls
- Main door with Engineered wooden frame and veneer shutter
- All other doors with Engineered wooden frame and Tubular boardshutter with melamine polish

## WINDOWS

- UPVC windows with glass panels
- UPVC French windows

## PLASTERING

- External: water proof sponge finish
- Internal: smooth plastering with putty

## FLOORING

- Double charged vitrified tile flooring in Living, Dining Bedrooms and Kitchen
- High Quality Ceramic tile flooring in Balconies and Utility
- Anti-skid Ceramic tile flooring in all toilets
- Marble/Granite/Vitrified tile flooring in the entrance lobby, lift lobby and corridor

## PAINTING

- Interior: Emulsion paint with roller finish
- Exterior: Weather proof paint
- All grills and railing with Enamel paint
- Main Door: Melamine Polish

## TOILETS

- Ceramic glazed tile dado upto false ceiling
- Wash basin with granite counter top in Master Bedroom Toilet
- Parryware / Cera/ Kohler or equivalent sanitary fittings
- Jaguar/ Grohe/ equivalent CP fittings

## KITCHEN

- 2 feet dado above the cooking granite platform, Stainless Steel Sink with Single Bowl and Drain Board
- Provision for washing machine in utility - Power point, Water supply and Drain will be provided
- Provision for sink in utility - Water supply and Drain will be provided
- Provision for RO in kitchen - Power point, Water supply will be provided



# SPECIFICATIONS

## ELECTRICAL

- Split AC provision for all bed rooms and living room - Power point and sleeve for A/C unit will be provided
- TV, Telephone points in Living & All Bed rooms
- FRLS Wires of standard make
- Electrical switches of Legrand/ equivalent make
- Electrical supply and power backup

## LIFT

- Automatic SS finish Lifts of Kone / Otis /Reputed make

## AMENITIES

### OUTDOOR AMENITIES

Children's play area | A magnificent swimming pool along with a Toddlers Pool | Multipurpose court | Landscaped Party Terrace  
Jogging Track

### INDOOR AMENITIES

Party Hall | Entrance Lobby | Convenience store | A well equipped gymnasium | Creche with play area | Sauna and Steam  
Saloon | Badminton court | Squash court | Indoor games like TT , cards, carrom , billiards | Coffee shop | Laundry

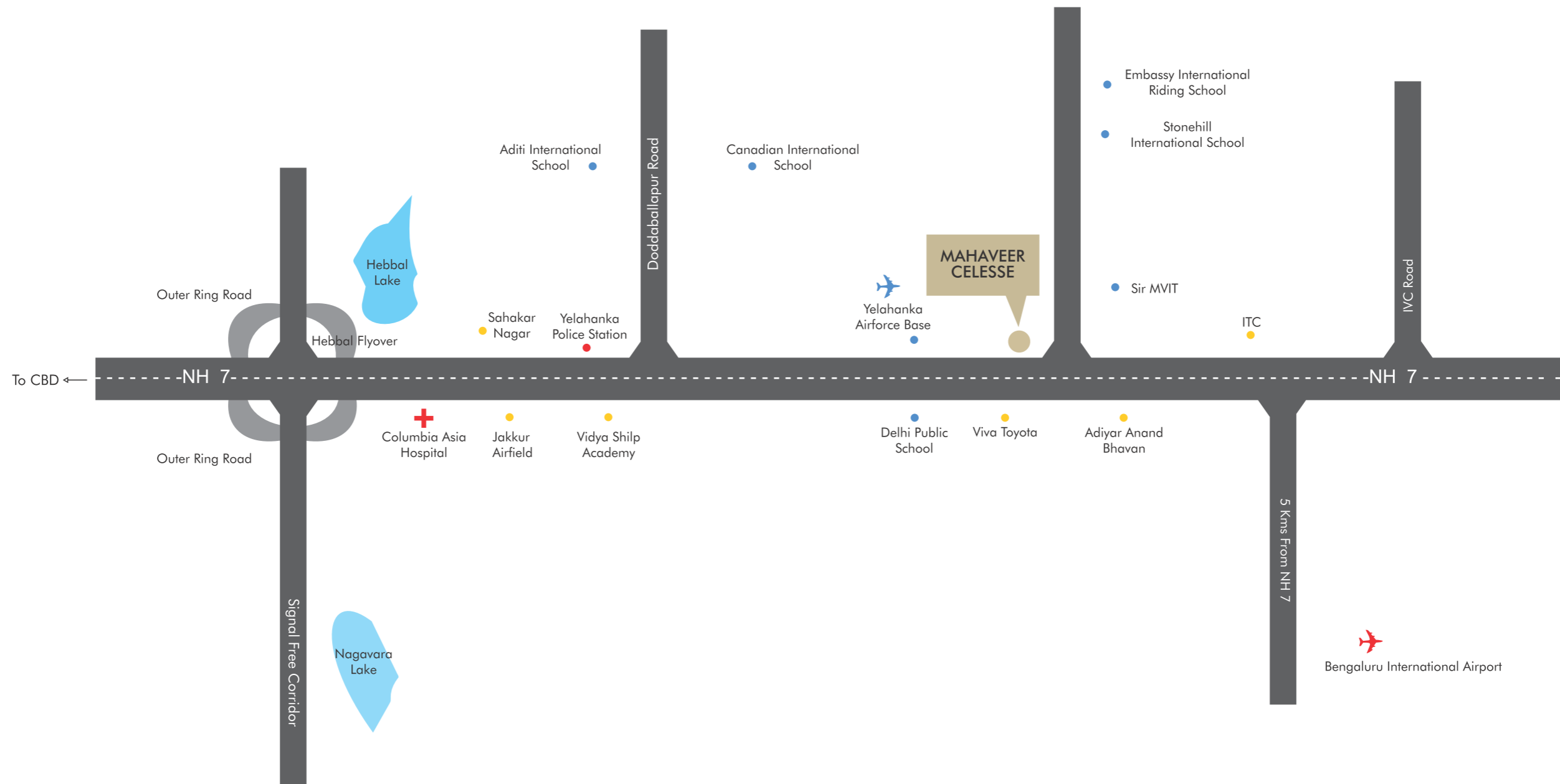
## SECURITY SYSTEM

- Round the clock security, 24 hours surveillance, CCTV
- Provision for video door phone

## OTHERS

- TV/CCTV/ Internet through integrated multi DTH system.

# LOCATION MAP



22 km from CBD  
 13 km from Hebbal Flyover  
 Stonehill International School - 5 km

Canadian International School - 7.5 km  
 Vidyashilp Academy - 8 km  
 Aditi International School - 8.5 km

Windsor Manor - 19 km  
 Columbia Asia Hospital - 12 km  
 Bengaluru International Airport - 13 km

**MAHAVEER CELESSE**

Not to Scale





**MAHAVEER**<sup>®</sup>  
Finest Homes & Honest Practices

Corporate Office:

**Reddy Structures Pvt. Ltd.** No. 133/1, 2nd floor, The Residency, Residency Road, Bengaluru - 560025

sales@mahaveergroup.in | www.mahaveergroup.in  /Mahaveerdevelopers

**CREDAI**<sup>↑</sup>  
BENGALURU